

## St. Helen's School



Original Church (1912)  
City of Burnaby Archives



Original Church (center), original school (right) (undated)  
c/o St. Helen's School



Class picture in front of original school (undated)  
c/o St. Helen's School



Grade 9 and 10 class, "St. Helen's High" (August, 1946)  
c/o St. Helen's School



## Gilmore School



Shortly after construction (1915)  
*City of Burnaby Archives*



Classroom (1920)  
*City of Burnaby Archives*

## Crabtown



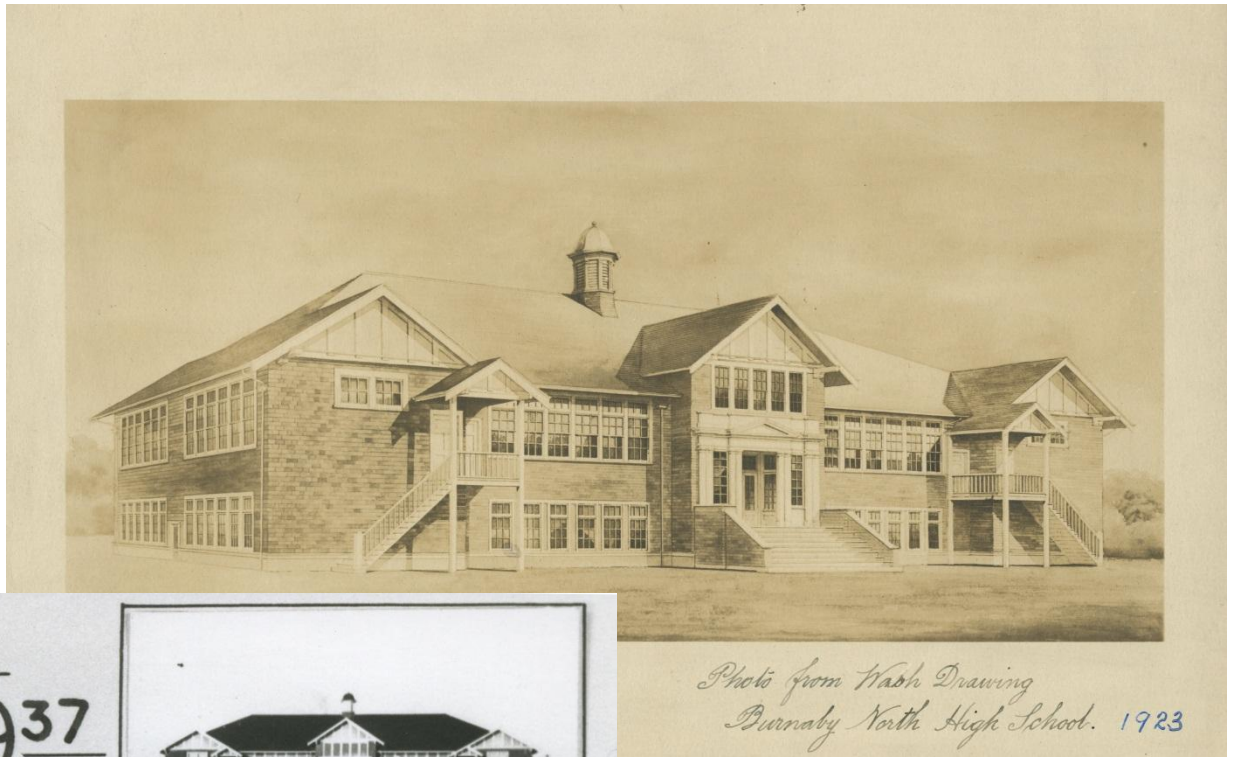
Crabtown, 1912 – 1957 at the foot of Gilmore and Burrard Inlet (1930)  
*City of Burnaby Archives*



Trudi and Aili Rintanen rinsing the wash in the Burrard Inlet with their mother, Aune Rintanen.  
(1930 ~ 1935)  
*City of Burnaby Archives*

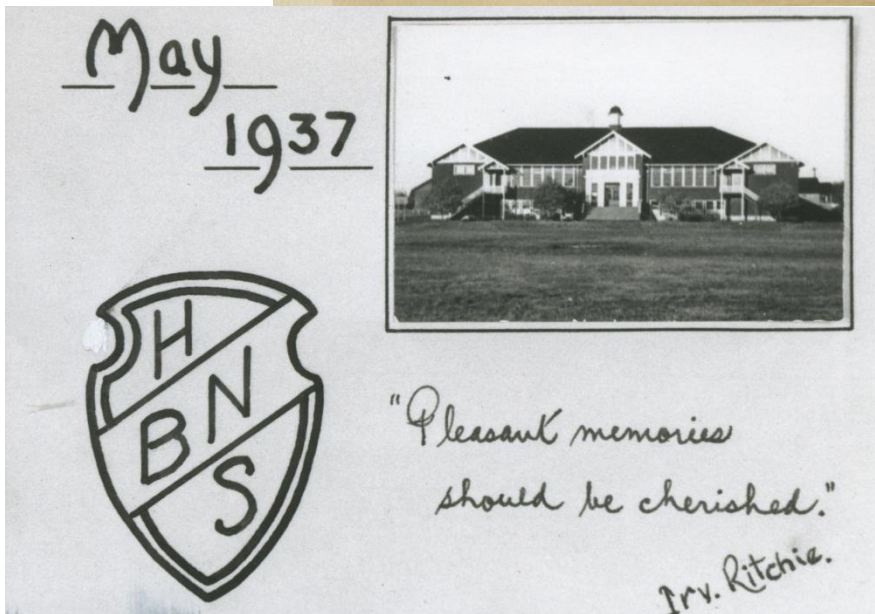


Rosser



*Photo from Wash Drawing  
Burnaby North High School. 1923*

Opening of Burnaby North High School (1923)  
City of Burnaby Archives



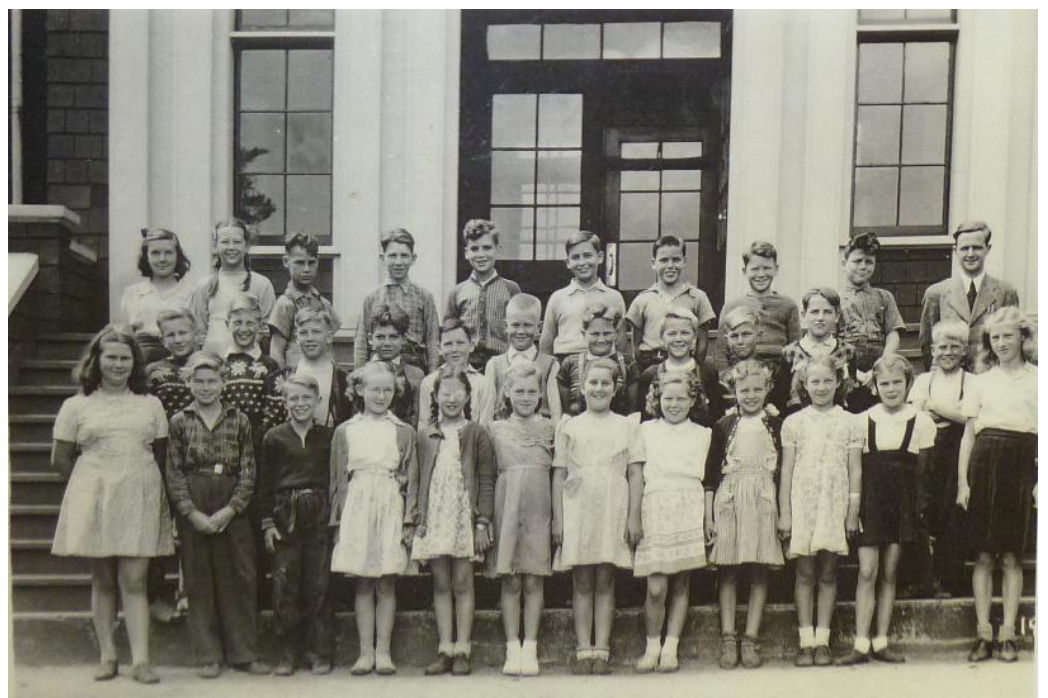
*May  
1937*



*"Pleasant memories  
should be cherished."*

*Irv. Ritchie.*

Class emblem (1937)  
City of Burnaby Archives



Class picture in front of original school entrance (1950?)  
Rosser School, c/o Mike Herbrec



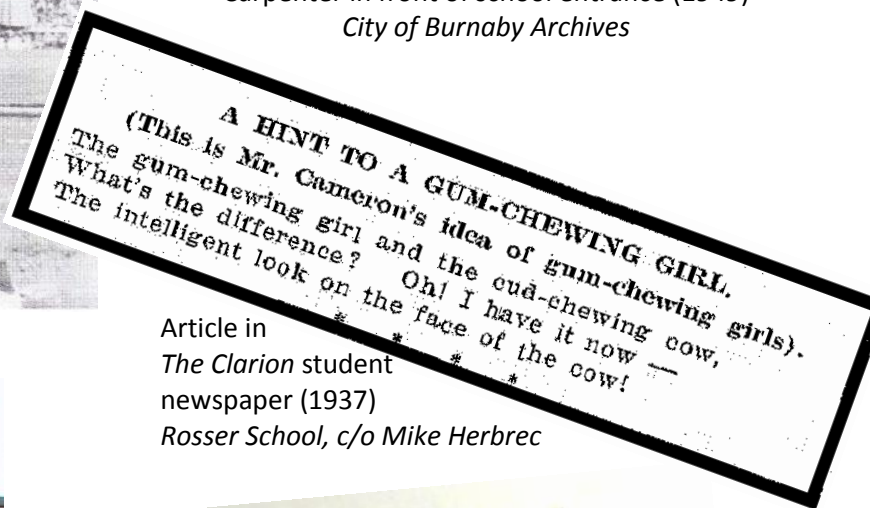
# Burnaby North High/ Junior High



Burnaby North Viking mascot (undated)  
c/o Burnaby North High



Burnaby North High School Principal George B. Carpenter in front of school entrance (1949)  
City of Burnaby Archives



Article in  
The Clarion student  
newspaper (1937)  
Rosser School, c/o Mike Herbrec



Heights Resource Centre (© Edward Swatchek, 2008)



The Clarion student newspaper (October, 1936)  
Rosser School, c/o Mike Herbrec